

FRENCHVILLE, MAINE

AL-6195 (FAA)

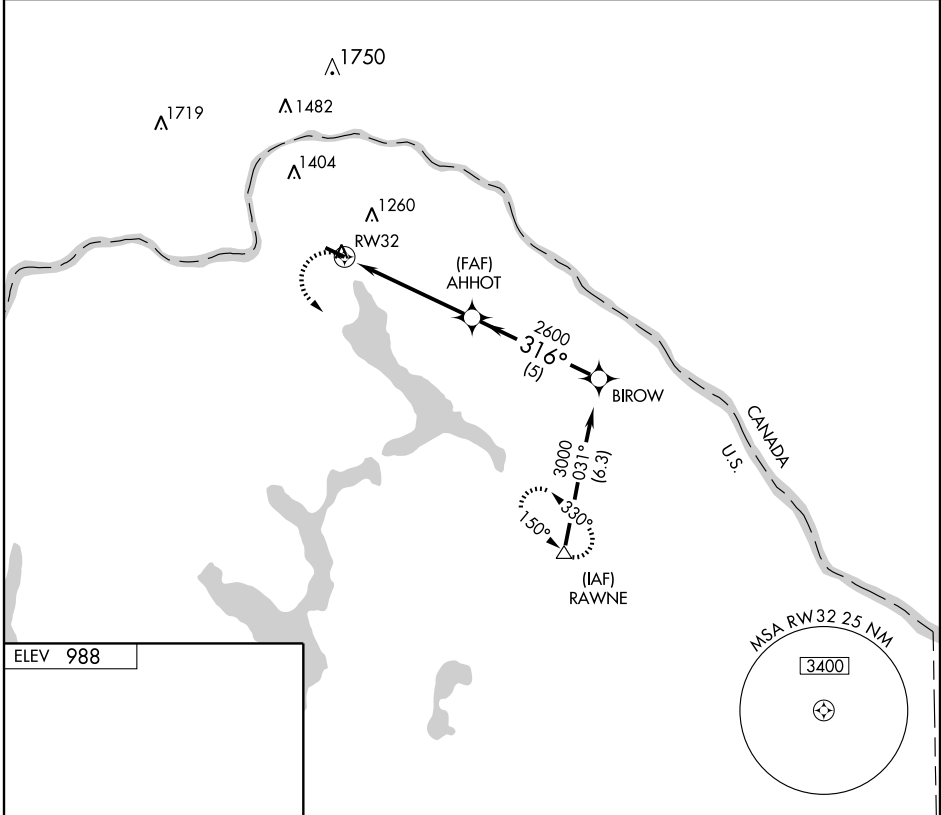
# RNAV (GPS) RWY 32

FRENCHVILLE / NORTHERN AROOSTOOK REGIONAL (FV'E)

APP CRS <b>316°</b>	Rwy Idg <b>4600</b> TDZE <b>988</b> Apt Elev <b>988</b>
------------------------	---

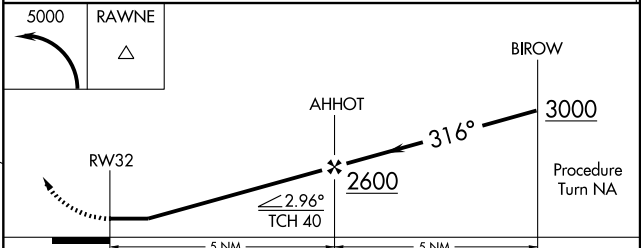
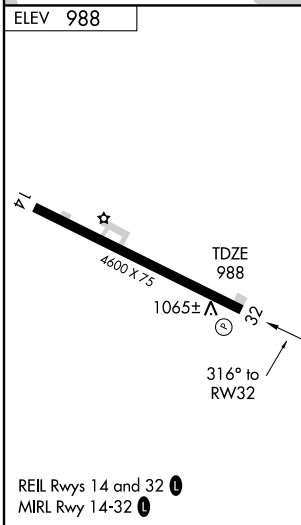
<b>▲</b> NA	GPS or RNP-0.3 required. DME/DME RNP-0.3 NA.	MISSED APPROACH: Climbing left turn to 5000 direct RAWNE WP and hold.
-------------	---	---

ASOS <b>135.725</b>	BOSTON CENTER <b>124.75 239.5</b>	UNICOM <b>122.8</b> (CTAF) <b>0</b>
------------------------	--------------------------------------	--



NE-1, 23 NOV 2006 to 21 DEC 2006

NE-1, 23 NOV 2006 to 21 DEC 2006



CATEGORY	A	B	C	D
LNAV MDA	1400-1	412 (500-1)	1400-1¼	412 (500-1¼)
CIRCLING	1560-1	572 (600-1)	1660-2 672 (700-2)	1660-2¼ 672 (700-2¼)

FRENCHVILLE, MAINE  
Orig 05356

FRENCHVILLE / NORTHERN AROOSTOOK REGIONAL (FV'E)  
47°17'N - 68°19'W

# RNAV (GPS) RWY 32